



METCHOSIN FIRE DEPARTMENT COVID-19 VIRUS EXPOSURE CONTROL PLAN

The following tables outlines departmental protocols in accordance to varying response levels amid the COVID-19 Pandemic State of Provincial Emergency (SOPE). The level of response will be based on provincial regulations and orders as determined by the Fire Chief or designate.

This is a living document and may be modified or updated as required.

Current Revision Date: **Friday, November 27, 2020**

General Principals:

- The intent of this plan is maintaining firefighter safety and effective fire and emergency services delivery to the District of Metchosin by modifying our access, training and operational protocols amid the current SARS Cov-2 (COVID-19) pandemic.
- To achieve this end state this action plan is designed to prevent the accidental spread of COVID-19 by engineering social distancing.
- **Individuals are not to enter the fire station if they are sick or have been exposed to a person known to be infected with COVID-19.**
- Anyone who chooses to travel off Vancouver Island will be asked to stay away from the fire station for a minimum 5 days.
- Anyone who comes into close contact with anyone who has recently travelled outside of Canada within the last 14 days will be asked to stay away from the station for 14 days upon coming into contact.
- Anyone who has come into contact with someone infected by COVID-19 or who has been told directed to self-isolate must notify their officer immediately and shall stay away from the station for 14 days from the date of contact.
- If you fall ill while at work or during practice, please advise your officer and leave immediately. Call 811 for guidance on COVID-19 testing.
 - If 811 advise you to be tested, you should stay away from the station until the results of the test are negative AND your symptoms of illness are completely gone; or
 - The 811 advise you not to test, you cannot return to work until your symptoms of illness are completely gone.
- If you are working with or near another employee where social distance of two meters cannot always be kept, all parties must wear a mask.
- Please abide by the posted occupancy and spacing requirements in rooms and apparatus.

Station Activities & Access

LEVEL 1	LEVEL 2	LEVEL 3
Day staff work as normal	Designated day staff 'bubble': Chief, Vince, Gord, Nik, Jacob, Scott & Dawson	Day Staff Bubble do not attend practices.
Day staff work as normal	Day staff work as normal	Day staff shift workdays / location / hours to accommodate segregation TBD
Controlled public access	No public access	No public access
If sick or any flu like symptoms do not attend training	Member Access: health check, hand sanitizer, temp check, sign in	No member access outside of call response
Attendance with social distancing and small groups when possible	Cancel all in-person events as necessary	Cancel all in-person events until further notice
Documented sanitization of all occupied spaces	Documented sanitization of all occupied spaces	Documented sanitization of all occupied spaces
Travel of members unrestricted	All travel outside South Island requires 5day quarantine from hall	All travel outside South Island requires 5day quarantine from hall

<p>Gym limited to 2 people at a time - same bubble (e.g. family)</p>	<p>Gym limited to members only</p>	<p>Gym is Closed</p>
<p>Lounge area open to members - maintaining physical distancing</p> <p>Self-screening sufficient</p> <p>Daily cleaning of all high-touch points.</p>	<p>Lounge area closed to members</p> <p>Documented screening questionnaire required for all members prior to entry.</p> <p>Cleaning of surfaces responsibility of members. High priority on disinfecting high touch points.</p>	<p>Lounge area closed to members</p> <p>Documented screening questionnaire required for all members prior to entry.</p> <p>Cleaning of surfaces responsibility of members. High priority on disinfecting high touch points.</p>

Training

LEVEL 1	LEVEL 2	LEVEL 3
Weekly in-person training, small groups - physical distancing when possible	In-person training is restricted to Platoon Group training. Schedule to be determined by officers.	All in-person training cancelled UFN
Outside training course attended - masks required	External courses attended at the discretion/comfort of the student - masks required.	No external courses attended
Meals to be plate serviced	No meal preparation - pre-package snack food only	No food or coffee preparation
Wipe down of apparatus after every use - responsibility of crew & maintenance	Wipe down of apparatus after every use - responsibility of crew & maintenance	Wipe down of apparatus after every use - responsibility of crew & maintenance
Train in full Platoons	Training in Groups - Max 6 per Group No mixed or cross training allowed	No training
Work in 2 Platoons	Work in 3 Platoons (segregate junior members)	No training
Platoon officers to complete Risk Assessment Tool for all training	Platoon officers to complete Risk Assessment Tool for all training	No Training
Regular training schedule	Modified training schedule – utilize online training Alternating weekly	No Training

Regular training records completed	Training records to utilize fillable digital forms.	No Training
Masks required when unable to maintain 6' physical distancing	Masks are to be worn at all times during training sessions except when SCBA is being used	No Training
Regular transport protocols – masks required.	Minimum numbers allowed in apparatus – masks required at all times	No Training
Regular maintenance disinfecting to be completed	Before training begins all high touch surfaces to be disinfected inside apparatus used, equipment and apparatus bay	No Training
Regular maintenance disinfecting to be completed.	After training each apparatus used to be wiped down and interior disinfected using the fog sanitizer – seal to be placed on doors once cleaned	No Training

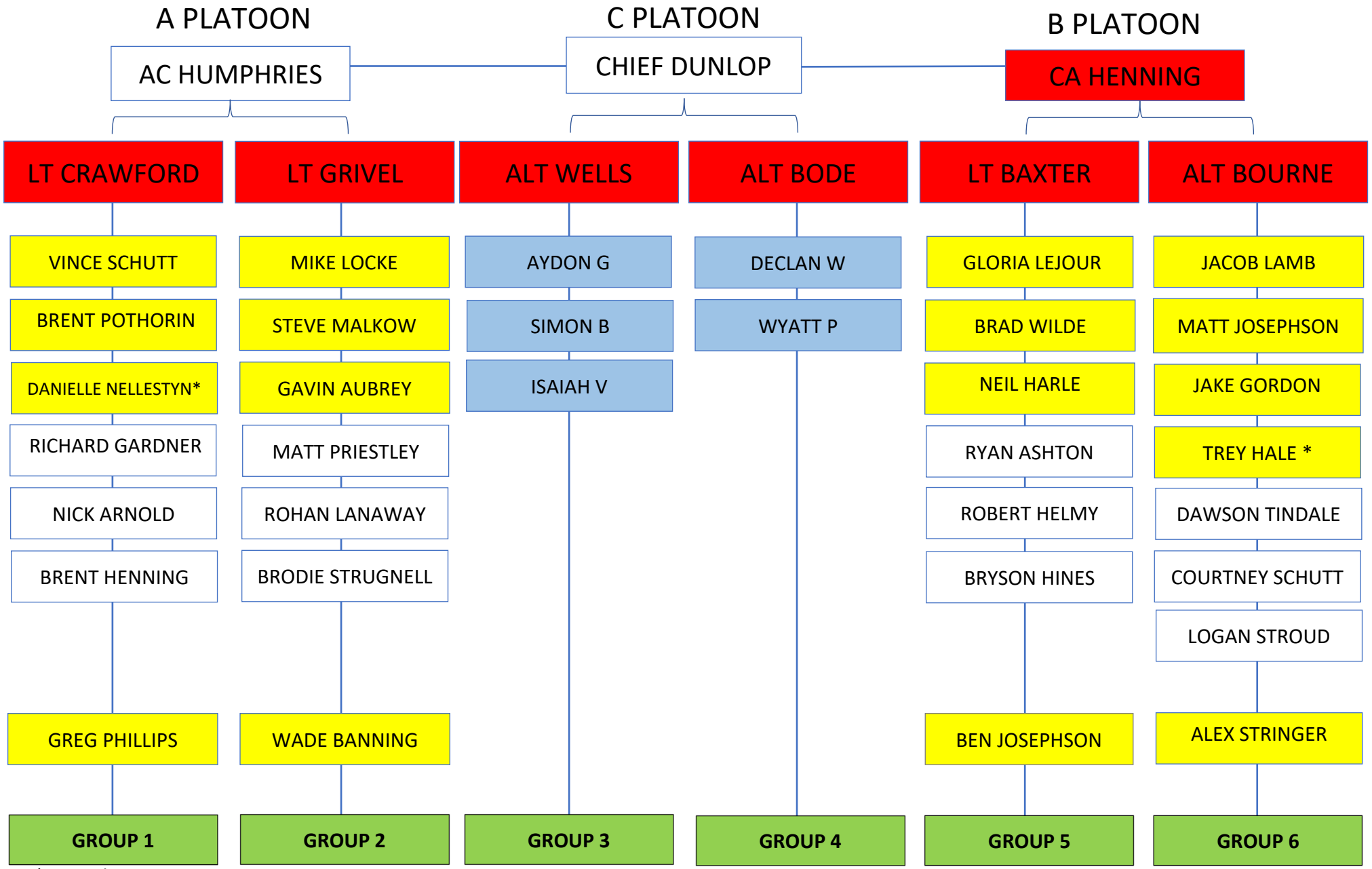
Individuals are to report if they are feeling sick or have been exposed to a person known to be infected with COVID-19.

Call Response

LEVEL 1	LEVEL 2	LEVEL 3
Non-ILI & general calls: surgical masks & face shields (when in patient care zone – 2m)	Non-ILI & general calls: surgical masks & face shields (when in patient care zone – 2m)	Non-ILI & general calls: surgical masks & face shields (when in patient care zone – 2m)
All calls: doorway screening protocols – limited entry	All calls: doorway screening protocols – limited entry – max 2 responders unless directed by IC	All calls: doorway screening protocols – limited entry – max 2 responders unless directed by IC
ILI or signs of: face shield, N95, gloves and gown	ILI or signs of: face shield, N95, gloves and gown	ILI or signs of: face shield, N95, gloves and gown
Confirmed COVID: N95, gown, gloves, face shield - full decon	Confirmed COVID: N95, gown, gloves, face shield - full decon	Confirmed COVID: N95, gown, gloves, face shield - full decon
Sanitize equipment after every call	Sanitize equipment after every call	Sanitize equipment after every call
Regular apparatus staffing	Max staffing on apparatus: R8/3; E6/2; Roll additional apparatus as needed – call dependant	Max staffing on apparatus: R8/3; E6/2; Roll additional apparatus as needed – call dependant
No masks required in apparatus	Masks require in apparatus	Masks require in apparatus
Mask on patient immediately - Temperature taken - if above 37 assume ILI	Mask on patient immediately - Temperature taken - if above 37 assume ILI	Mask on patient immediately - Temperature taken - if above 37 assume ILI

<p>CPR – Mask over patients mouth, focus on compressions. Continue with OPA & two-handed seal on BVM when safe to do so (ie enough responders) Pause CPR for ventilations</p>	<p>CPR – Mask over patients mouth, focus on compressions. Continue with OPA & two-handed seal on BVM when safe to do so (ie enough responders) Pause CPR for ventilations</p>	<p>CPR – Mask over patients mouth, focus on compressions. Continue with OPA & two-handed seal on BVM when safe to do so (ie enough responders) Pause CPR for ventilations</p>
<p>Oxygen - utilize SPO2, if below 94% or showing signs of breathing distress, administer oxygen at the lowest flow rate necessary to maintain SPO2 above 94%. Otherwise no oxygen.</p>	<p>Oxygen - utilize SPO2, if below 94% or showing signs of breathing distress, administer oxygen at the lowest flow rate necessary to maintain SPO2 above 94%. Otherwise no oxygen.</p>	<p>Oxygen - utilize SPO2, if below 94% or showing signs of breathing distress, administer oxygen at the lowest flow rate necessary to maintain SPO2 above 94%. Otherwise no oxygen.</p>
<p>Call response as per normal - duty shifts as per normal</p>	<p>Call response as per normal - duty shifts as per normal</p>	<p>To be determined at the time - consider dedicated duty crew to maintain crew segregation if necessary</p>
<p>Inside of apparatus shall be wiped down on high touch points and fog sanitizer in cab – seal doors.</p>	<p>Inside of apparatus shall be wiped down on high touch points and fog sanitizer in cab – seal doors.</p>	<p>Inside of apparatus shall be wiped down on high touch points and fog sanitizer in cab – seal doors.</p>

All department members have a responsibility while off duty to ensure they are aware of Provincial Health Officer Orders and recommendations to ensure they are following best practices to reduce the potential for exposure and introduction to the workplace



*on Probation

Training and COVID-19 safety

In the context of the province's response to COVID-19, it is essential that workers are kept healthy, safe, and able to perform their work in providing care and service in all settings. Ongoing care and attention given to personal protection equipment (PPE) and infection prevention and control practices is essential to keeping workers safe. The safety of workers is critical in the response to the pandemic, as is managing and monitoring equipment supply so that every worker has the right PPE at the right time.

Social (Physical) Distancing

Social or more commonly being referred to as physical distancing is the newest element for workplace/individual safety and is receiving widespread attention since COVID-19 was declared a pandemic by The World Health Organization.

Social or physical distancing can be defined as “remaining out of congregate settings, avoiding mass gatherings and maintaining distance (approximately 6 feet or 2 meters) from others when possible.”

Social or physical distancing accepts or acknowledges that the coronavirus is likely widespread, community transmission is already occurring, and the number of diagnosed cases is going to rise as more people receive testing.

Social or physical distancing, along with other risk reduction methods, attempts to slow the spread of COVID-19 and reduce the speed of new diagnoses, especially severe cases, in need of prehospital and in-hospital care.

According to the Centre for Disease Control (CDC), COVID-19 is mainly spread from person to person between people who are in close contact with one another (within about 6 feet) and through respiratory droplets produced when an infected person coughs or sneezes.

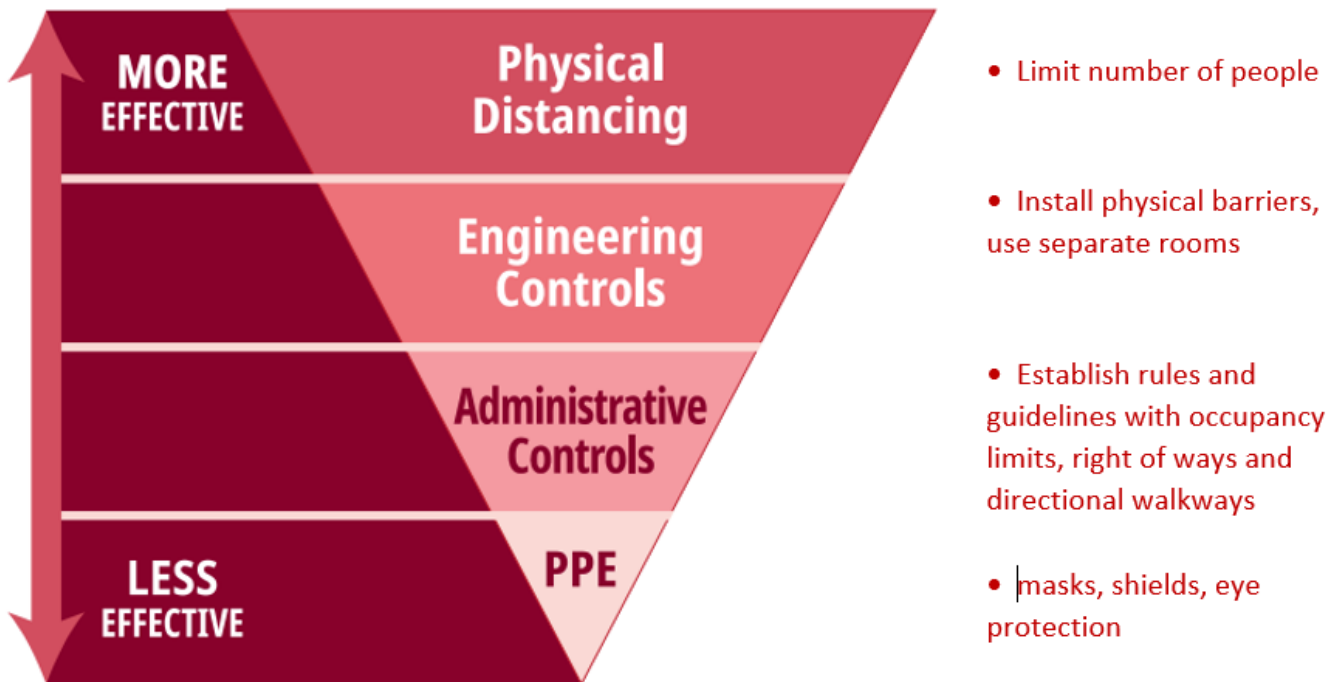
The basics of preventing virus transmission and social distancing remain the same:

- Try to maintain at least a 2-metre distance from others as much as possible (e.g., 2 arm's length from another person)
- If two people are entering a hallway or staircase, wait until the area is clear before proceeding
- Ensure hands are cleaned and disinfected well and often (i.e., wash thoroughly with soap and water for at least 20 seconds)
- Avoid touching your face, nose, and mouth (and avoid rubbing your eyes)

- Practice proper coughing or sneezing etiquette
- Dispose of anything that meets your mouth such as tissues or plastic eating utensils
- Avoid contact with individuals displaying symptoms of COVID-19 (cough, fever, breathing difficulties)
- Avoid congregating in groups larger than 50

All training grounds to implement the following best practices in all cases:

- Wash hands regularly
- Regularly clean and disinfect frequently touched surfaces
- Do not share food, drinks, utensils, etc.
- Maintain physical distancing at all times
- Minimize the length of time groups are in close proximity



COVID-19 Virus Exposure Control Plan Policy Acknowledgement:

I acknowledge that I have been informed and trained on all safety practices listed in the Metchosin Fire Department COVID-19 Virus Exposure Control Plan, and I agree to abide by all new safety practices outlines until further notice.

Name

Signature

Date